



TRAFFIC ANALYSIS



CDR Traffic Analysis System is becoming a business management tools used to visually ascertain the status (or “health”) of a business enterprise via key business indicators.

NT-CDR Traffic Analysis use visual, at-a-glance displays of data pulled from MMSC to provide warnings, action notices and summaries of business condition based on CDR from Indosat’s MMSC. This Traffic Analysis System should become extremely useful tools to identify your network quality of service, early warning, build up your marketing campaign and capacity planning with the information of your network profile in a simple and pretty interface.

TRAFFIC ANALYSIS

NT-CDR Traffic Analysis will have the following function :

1. Quality Monitoring

- a. Successful Rate
- b. TPS (Transaction Per Second)
- c. CPU Load

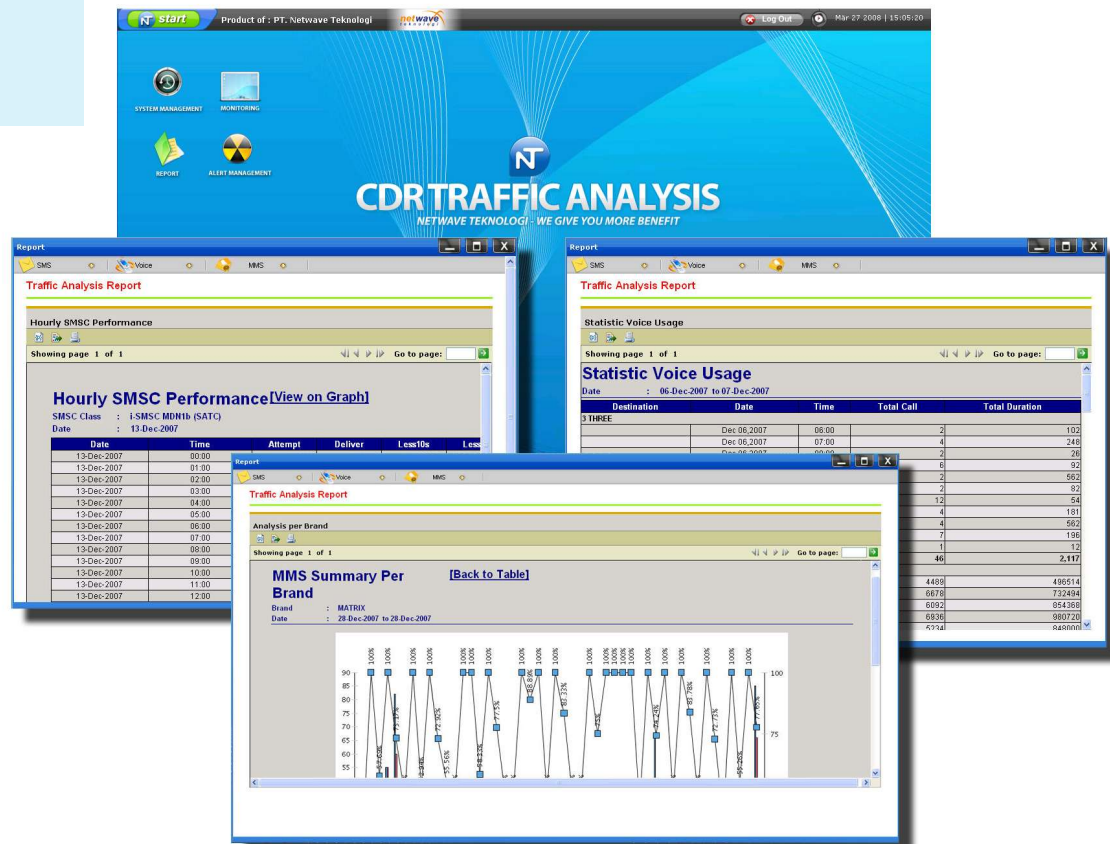
2. Performance Report, it can be categorized based on :

- a. Timestamps (hourly,daily, weekly, monthly)
- b. Brands
- c. Class of Services (P2P, P2M, M2P, P2E-mail)
- d. Destination (P2p on-net, P2P off-net national, P2P off-net international, etc)
- e. Status (OK, Error, Expired, Retrieved, Rejected, Deferred)

3. Early Warning System (Alert)

NT Traffic Analysis has complete and powerful standar modules :

- Audit Trail
- Trouble Escalation
- Record Browse and Editor (CDR Correction)
- Monitoring
- Hierarchical User Management
- Alert Management using SMS and Email
- Report Management
- House Keeping
- Backup and Restore



PT. NETWAVE TEKNOLOGI

Komplek Perkantoran Pesona View Blok A No. 10
Jl. Ir. H. Juanda, Depok 16411

+62 21 7784 0980

+62 21 7784 0990

+62 21 7783 1244 (fax)

www.netwave-tek.com

